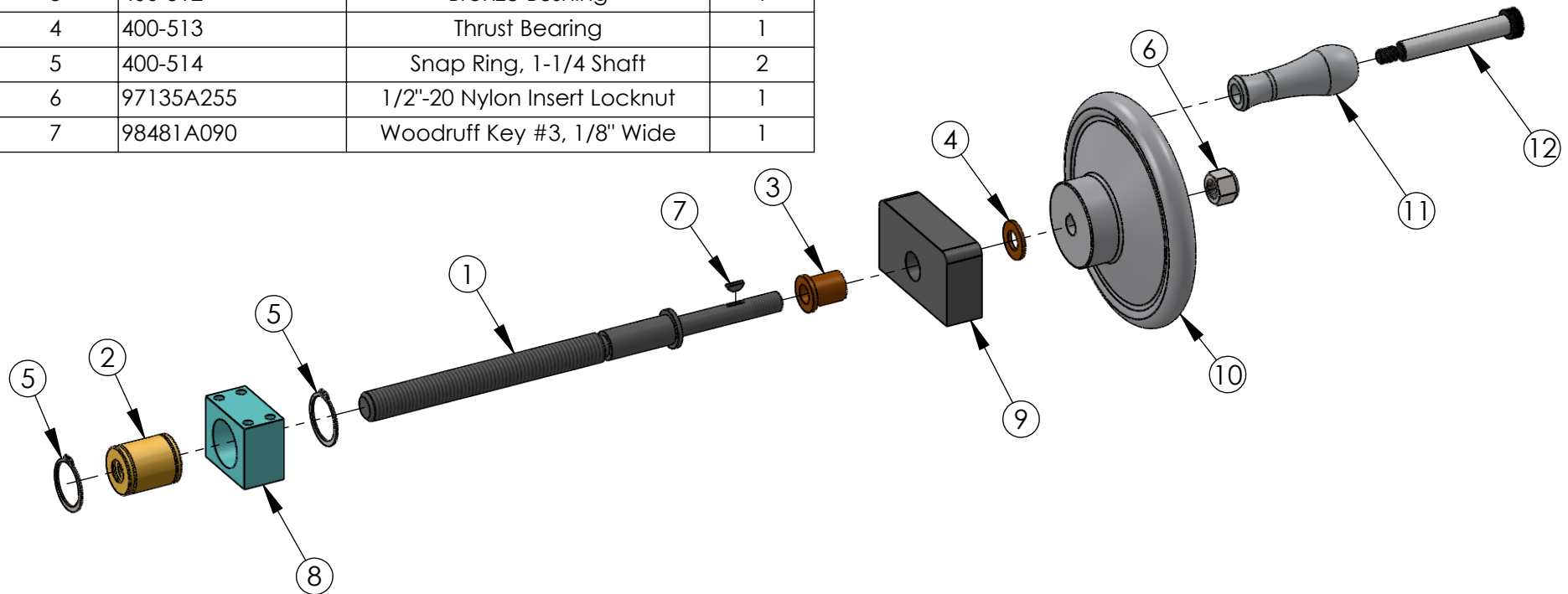


Parts Included in Kit

ITEM NO.	PART NUMBER	DESCRIPTION	QTY.
1	400-005-RH	Roton Screw RH	1
2	400-009-RH	Right Hand Bronze Roton Nut	1
3	400-512	Bronze Bushing	1
4	400-513	Thrust Bearing	1
5	400-514	Snap Ring, 1-1/4 Shaft	2
6	97135A255	1/2"-20 Nylon Insert Locknut	1
7	98481A090	Woodruff Key #3, 1/8" Wide	1



Not Included in Kit

ITEM NO.	PART NUMBER	DESCRIPTION	QTY.
8	400-011	Bronze Nut Block	1
9	400-012	Bushing Block	1
10	400-020	Hand Wheel	1
11	400-021	Aluminum Handle	1
12	91259A724	3/8"-16 x 1/2" Shoulder x 3" Socket Head Shoulder Screw	1

PROPRIETARY AND CONFIDENTIAL

THE INFORMATION CONTAINED IN THIS DRAWING IS THE SOLE PROPERTY OF MITTLER BROS. MACHINE & TOOL. ANY REPRODUCTION IN PART OR AS A WHOLE WITHOUT THE WRITTEN PERMISSION OF MITTLER BROS. MACHINE & TOOL IS PROHIBITED.

QUANTITY

MATERIAL

FINISH

DO NOT SCALE DRAWING

NAME	DATE
MSA	11/8/19

UNLESS OTHERWISE SPECIFIED:

DIMENSIONS ARE IN INCHES
TOLERANCES:
FRACTIONAL ±1/32
ONE PLACE DECIMAL ±.015
TWO PLACE DECIMAL ±.010
THREE PLACE DECIMAL ±.005
ANGULAR ±1°

COMMENTS:

MB MITTLER BROS. MACHINE & TOOL
10 Cooperative Way, Wright City, MO. 63390
(636)745-7757 Fax (636)745-2874

TITLE:

Left-Right Feed Assembly

SIZE

A

DWG. NO.

400-302

REV

SCALE: 1:4

WEIGHT:

SHEET 1 OF 1