

# Beverly THROATLESS SHEAR

Hold Down (Model B-3 only)  
Adjust for firm contact  
with work.

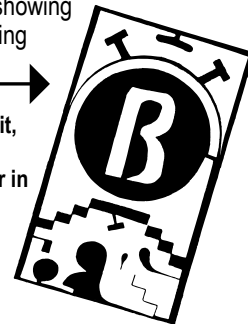
Lower Blade  
adjustment screws. Turn  
clockwise for decreased  
blade clearance.

Rack and Pinion  
Bolt. Keep tight  
without binding.

Blade Clamp-loosen  
when setting blades.

All moving parts of Beverly Shears should be kept well oiled with a good grade of machine oil. Use a good graphite oil on the inside slotter. Do not overtighten any bolts on linkages, blades, etc., unless otherwise specified. Do not use worn or dull blades on any shear. Chipped blades or blades showing signs of wear and dulling should be sent to the factory for re-sharpening

Your Beverly is a versatile metal cutting tool. With it, you can make virtually any desired cut in most metals. The sample was cut with a Model B-1 shear in 18 Ga. metal.



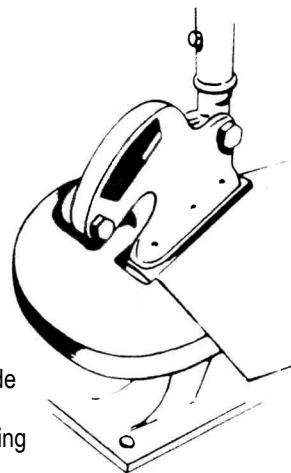
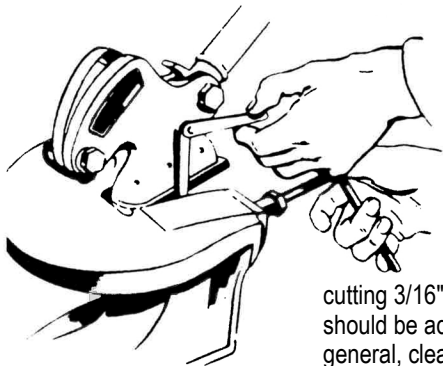
## HOW TO MAKE CUTS

Get more power and control by starting all cuts at the heel of the blades. Circular and irregular cuts are made by turning the work, at the same time following through with the downward stroke of the blade. When a cut has been finished, push the work forward, at the same time the blade is raised by the handle so that the next cut can be started at the blade heels. Always keep the material being cut flat on the bed of the shear.

## SIMPLE, EASY Blade Adjustments.

Required blade clearance is obtained by adjusting the lower blade. Loosen the blade Clamp and turn the two set screws in or out to obtain proper clearance.

Your Beverly is properly set for its maximum capacity when it leaves the factory. In general, for cutting 3/16" to 14 Ga; clearance between upper and lower blade should be adjusted according to material being sheared. In general, clean, burr-free cuts can be made on a Beverly by setting the blades 1/4 to 1110th the thickness of the metal to be cut. When ragged cuts are encountered, check blade clearance and condition of blade sharpness.



## BLADE SHARPENING *Service*

Get maximum utility from your Beverly by keeping the blades sharp. Dull or chipped blades will produce ragged, inaccurate cuts and poor work in general. Take advantage of the expert blade sharpening service maintained at the factory. Your blades will be re-sharpened and ground to the correct cutting angle and returned to you promptly. This blade sharpening service is maintained at nominal cost to you. All blades will be processed and returned to you within 1 to 2 weeks after the receipt by the factory. Beverly Shears and Metal Cutting Tools are available at most sheet metal supply and machinery houses. See your nearby dealer for complete details on any Beverly product.

# Beverly Shear

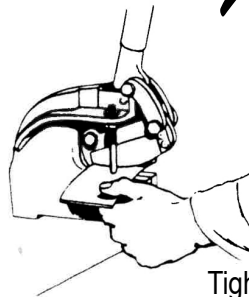
MANUFACTURED BY

## MB MITTLER BROS. MACHINE & TOOL

10 Cooperative Way · Wright City, Missouri 63390

1-800-467-2464 [www.mittlerbros.com](http://www.mittlerbros.com) [f](#) [i](#) [t](#) [v](#) #mittlerbros

## Beverly SPLITTING SHEAR



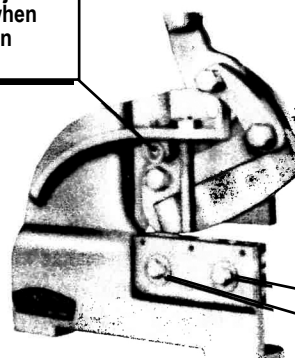
When using the Slitting Shear for cutting, trimming or slitting, always keep material flat on bed of Shear. Start the cut at the heel of the blades, as this is the point of greatest power.

To make the lower blade settings, loosen cap screws and make desired adjustment.

Tighten cap screws firmly. Blade Clearance on all Model Slitting Shears should be maintained at .000 to .002 for all gauges of metal. Elongated holes through which the lower blade retaining screws pass, permit raising the lower blade to compensate for resharpening and wear.

Bearing Shoe. Keep well oiled. Adjust to finger tight when shear is not in operation.

GUIDE Links. Tighten only to maintain straight downstroke of Upper Blade. Same applies to rear pivot bolt.



Lower Blade retaining Screws. Blade adjustment screws immediately above.

# Beverly Shear

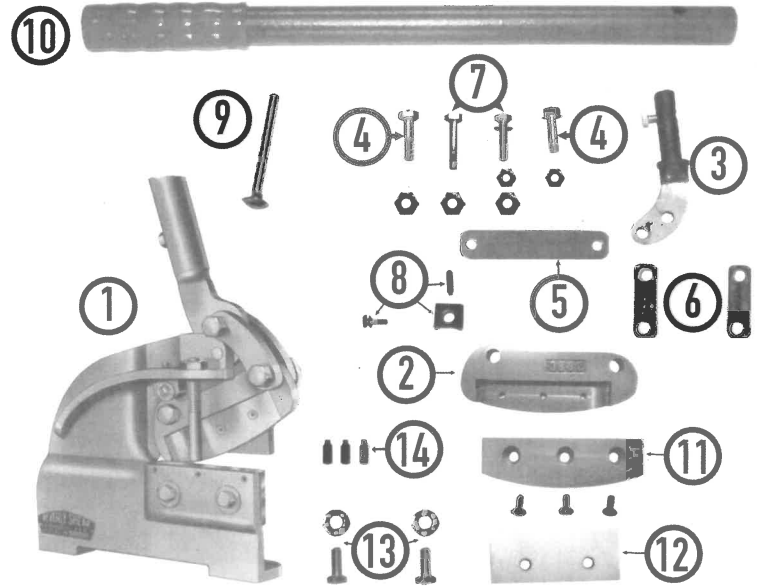
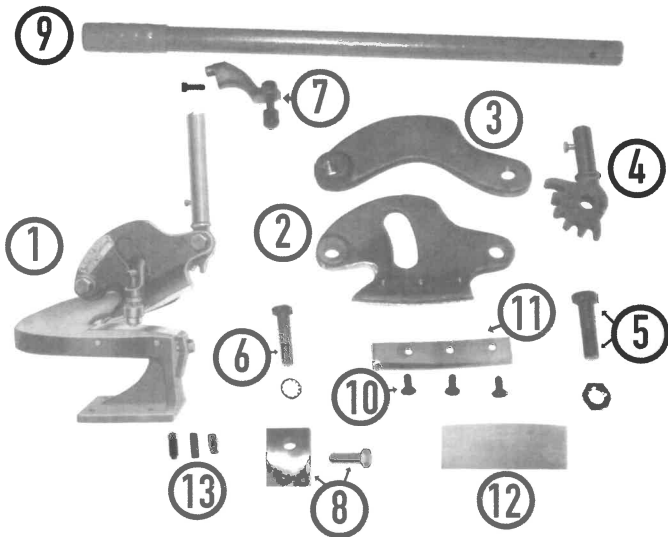
MANUFACTURED BY

# MB MITTLER BROS. MACHINE & TOOL

10 Cooperative Way • Wright City, Missouri 63390

1-800-467-2464 [www.mittlerbros.com](http://www.mittlerbros.com) [f](#) [@](#) [t](#) [v](#) #mittlerbros

All prices are F.O.B. Wright City factory and are subject to change without notice. Merchandise will be billed at prices in effect at time of shipment.



## BEVERLY THROATLESS SHEARS

		B1	B2	B3
	PRICE, COMPLETE	\$725.00	\$995.00	\$1445.00
3600-XX-100	Blades, per pair	\$115.00	\$148.00	\$207.00
3600-XX-105	Blade sharpening, per pair *	\$60.00	\$70.00	\$85.00
3600-XX-210	Base (Frame) **	\$340.00	\$538.00	\$773.00
3600-XX-220	Upper Blade Holder	\$98.00	\$125.00	\$167.00
3600-XX-230	Guide Arm	\$60.00	\$72.00	\$95.00
3600-XX-240	Ratchet & Bolt	\$91.00	\$105.00	\$140.00
3600-XX-250	Ratchet Bolt & Nut	\$7.50	\$9.00	\$10.00
3600-XX-260	Rear Pivot Bolt	\$10.00	\$11.00	\$12.50
3600-B3-270	Hold-Down Assy	N/A	N/A	\$102.00
3600-XX-280	Blade Clamp & Bolt	\$32.00	\$36.00	\$42.00
3600-XX-290	Handle	\$46.00	\$60.00	\$67.00
3600-XX-300	Upper Blade Screws	\$11.00	\$14.00	\$18.00
3600-XX-310	Upper Blade	\$80.00	\$104.00	\$141.00
3600-XX-320	Lower Blade	\$74.00	\$96.00	\$130.00
3600-XX-330	Lower Blade Adj. Screw	\$10.00	\$10.00	\$12.00

Replace **XX** in sku's with appropriate B1, B2 or B3 model for each item

N / A - Not Applicable/ Not Available

Parts For Pneumatic Shears Subject To Availability. Call for Pricing

\* An additional charge will apply to all blade sharpenings other than normal. Any excessive wear, chips or alteration to factory specifications noted upon our receipt and inspection will be computed into the final charge.

## BEVERLY SLITTING SHEARS

		SS2	SS3
	PRICE, COMPLETE	\$415.00	\$590.00
3600-XX-100	Blades, per pair	\$172.00	\$170.00
3600-XX-105	Blade sharpening, per pair *	\$63.00	\$67.00
3600-XX-210	Frame **	\$175.00	\$217.00
3600-SS3-220	Blade Holder	N/A	\$182.00
3600-XX-230	Club-Foot & Bolt	\$92.00	\$136.00
3600-XX-240	Pivot & Club -Foot Bolts	\$10.00	\$11.50
3600-XX-250	Guide Arm	\$33.00	\$40.00
3600-XX-260	Links (2)	\$67.00	\$78.00
3600-XX-270	Links Bolts	\$10.00	\$11.50
3600-XX-280	Bearing (Pivot Shoe) Assy.	\$22.00	\$26.00
3600-XX-290	Hold Down	\$10.00	\$11.00
3600-XX-300	Handle	\$46.00	\$60.00
3600-XX-310	Upper Blade	\$121.00	\$108.00
3600-XX-320	Lower Blade	\$66.00	\$82.00
3600-XX-330	Lower Blade Mounting Bolts	\$7.00	\$8.50
3600-XX-340	Lower Blade Adjusting Screws	\$6.50	\$8.00

Replace **XX** in sku's with appropriate SS2 or SS3 model for each item

N/A - Not Applicable/Not Available

Upper Blade and Blade are one part on the SS-2.

\*\* Frame pictured is completed unit.

**AS ALWAYS - MADE WITH AMERICAN PRIDE  
- AMERICAN STEEL  
FULLY MADE IN THE USA**

